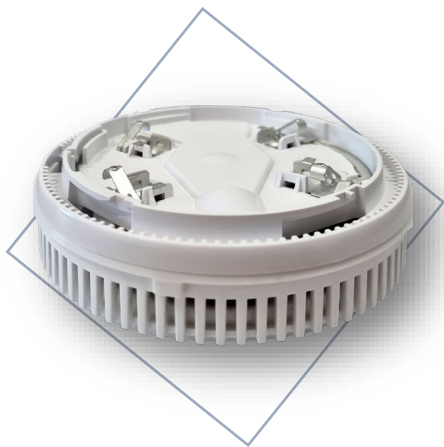


## Analogue - addressable sounder with base



- Ceiling mount sounder with built-in standard base
- 32 different tone types at two sound levels
- Up to 100 sounders on loop (on low level sound)

SensoIRIS CSOU is a sounder with integrated base for SensolIRIS detectors. SensolIRIS CSOU is compatible for mounting on all models standard bases for SensolIRIS devices - SensolIRIS B124 and SensolIRIS B124-HP

The sounder supports 32 different tone types at two sound levels. The tone type and sound level are programmed from the control panel.

The SensolIRIS CSOU is compatible for operation with SensolIRIS analogue - addressable detectors series: T110 (IS), S130 (IS) and M140 (IS).

### Features

- One point of installation for detector, sounder and visual indicator with no additional wiring
- Two sound levels - LOW: 81dB (A)  $\pm 3\text{dB}@3\text{m}$ ; HIGH: 88dB (A)  $\pm 3\text{dB}@3\text{m}$
- 32 tone types selectable from the panel
- Up to 100 sounders on loop (on low level sound)
- Loop synchronization for uniform and clear alarm signal
- Protection Degree -IP21C, type A
- Sounder Type: A
- Loop powered
- Compatible with SensolIRIS detector series
- Mounts directly on standard B124 or B124-HP to save time
- Optional cover when used only as a sounder

### Technical Specifications

Operating Voltage Range	16 - 32VDC
Maximal consumption at communication	470 $\mu\text{A}$ @ 27VDC
Maximal consumption (main tone type 27:	
- low volume level	3 mA @ 27VDC
- high volume level	10 mA @ 27VDC
Power volume:	
- low volume (up to 100 pcs sounders* to the loop).	~ 81dB (A) $\pm 3\text{dB}$ @ 1m
- high volume (up to 30 pcs sounders* to the loop)	~ 88dB (A) $\pm 3\text{dB}$ @ 1m
Wire Gauge for terminals	0.4 - 2.0mm <sup>2</sup>
Material and color	ABS / White
Dimensions	105 x 22 mm
Operation temperature	-35°C ÷ +55°C

Last update: 03.2025